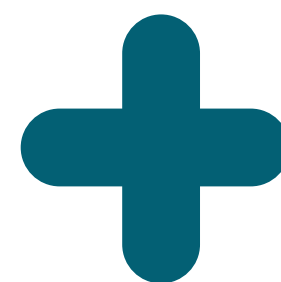


ANNUAL REPORT 2023-2024



Everyone should have an equal opportunity to succeed.



FONDATION
laclê
Pour la réussite des jeunes en HLM



TABLE OF CONTENTS

A STEPPING STONE FOR ACHIEVEMENT

- 3 Message from the president and executive director
- 4 Statements from the spokesperson and ambassador
- 5 Mission, vision, and values

OUR ACCOMPLISHMENTS

- 6 Persévéra scholarships
- 9 Assessment and outcomes of the Fondation Scholarship Program
- 11 Collège de Montréal scholarships
- 13 Bridging Families to High-Speed Internet
- 14 Assistance for community organizations

FINANCING AND COLLABORATIONS

- 16 The Evening of Possibilities – First Edition
- 17 The workplace campaign of the Office municipal d’habitation de Montréal
- 18 The Montreal 21K Charity Challenge
- 20 Our Collaborators

VOLUNTEERS AND CONTRIBUTORS

- 21 The Board of Directors and the Foundation Team
- 22 The Donor Honor Roll

FINANCIAL STATEMENT

ANNEXES

- Appendix No. 1 – Catalogue of community organizations endorsed by the Foundation
- Appendix No. 2 – Statistical data on Persévéra scholarships, from 2014 to 2024

LA FONDATION LA CLÉ: A STEPPING STONE FOR YOUTH IN PUBLIC HOUSING.

MESSAGE FROM THE PRESIDENT AND THE EXECUTIVE DIRECTOR

“Thank you all for making my tenure as President so fulfilling!”

The year 2023–2024 has proven to be significant, and this is a positive development. The Fondation La Clé has successfully harnessed the capabilities of its permanent staff and board of directors to enhance its influence within the philanthropic sector. Armed with a new strategic plan, the directors have committed resources to various initiatives, including the revival of the annual benefit event, the pursuit of a new ambassador, the rollout of a high-speed internet connection program for families, and the recruitment of a new individual for the general management position.

These examples, along with the numerous other mandates introduced throughout the year, illustrate the significant scope of the Board of Directors’ responsibilities. I wish to express my gratitude and emphasize their dedication and invaluable collaboration. Without their efforts, this inaugural year of strategic planning implementation would not have been as fruitful.

I would like to take this opportunity to express my gratitude to Corneille, who has wholeheartedly embraced the role of ambassador for the Foundation. His genuine commitment to the plight of young individuals in affordable housing has profoundly moved me, and I am confident that under his leadership, Fondation La Clé will establish itself as a prominent foundation in Quebec.

In conclusion, I must acknowledge the departure of Isabelle Parizeau and the two Nathalie from the Foundation: Nathalie Sanon, in her role as administrator, and Nathalie Thifault, as executive director. Each of them has made a significant impact on the Fondation La Clé in their own unique manner.

First, Isabelle Parizeau served on the board of directors for five years. Through her diligence and understanding of the circumstances faced by immigrants and First Nations, Isabelle successfully initiated pertinent and essential discussions regarding the needs of young people and the actions to be undertaken by the Foundation.

I extend sincere thanks to all three members for their time, contribution and dedication.



Brigitte Samson
Chairwoman of the
Board of Directors



Patsy Joncas
Executive Director



“Thank you all for your warm welcome, your openness, and your enthusiasm!”

Although I arrived last April, a few months prior to the conclusion of the 2023–2024 year, I recognize that I still have much to convey in this annual report. First, I would like to express my gratitude for the warm welcome extended to me by Nathalie Thifault and Julia Fraysse of the Foundation. Their support was instrumental in easing my integration and assisting me in acclimating to the remarkable team at the Office municipal d’habitation de Montréal, which is energetically led by Isabelle Pépin.

A brief mention of the Foundation’s Board of Directors is warranted, as I am consistently impressed by their dedication and versatility. They readily engage in outreach to assess families’ satisfaction with our programs, organize benefit events within their homes or professional networks, and meticulously analyze complex funding application documents. This commitment complements their responsibilities as administrators and members of various committees. What could be more inspiring for a general director!

This engagement necessitates that I meet their expectations and aspirations for the Foundation. I am confident that with the extensive support they are prepared to provide, along with the contributions of my colleague, Julia, and our essential partners such as Éducaide and the Collège de Montréal, I will be able to carry on the work initiated by my predecessors.

STATEMENTS FROM THE SPOKESPERSON AND THE AMBASSADOR



Corneille,
ambassador



Patrice Bernier,
Spokesperson

I am motivated by the aspiration to make a positive difference in the lives of young individuals from underprivileged backgrounds, demonstrating that resilience and perseverance are essential to achieving success, regardless of the challenges faced.

I also wish to provide young individuals with the opportunity to demonstrate their talents, enabling them to distinguish themselves and transcend the challenging circumstances that envelop them.

"We may not always recognize it, but motivating young individuals to remain in school is vital for the future of our communities. Reflecting on the students who, through mere chance, are raised in less enriching environments or experience poverty evokes a sense of sadness."

These young individuals possess equal potential to their peers. They simply require additional motivation, a slight encouragement to foster self-confidence.

10, 000 TIMES
THANK YOU!



THE KEYS TO AN IMPROVED FUTURE MISSION, VISION, AND VALUES

The Fondation La Clé, established by the Office municipal d'habitation de Montreal, commenced its operations in 2011 to promote academic perseverance and social engagement among youth in low-income housing. Over a decade later, it continues to uphold its mission, as the needs remain as pressing as ever.

The images disseminated by the media in June 2024 regrettably confirmed that the living conditions of families in social housing are frequently quite challenging. This depiction underscored the significance of our foundation and reinforced our resolve to intensify our efforts. Young individuals from these families merit mobilization to enhance their prospects for a brighter future, both for themselves and their loved ones. At the Foundation, we are convinced that by providing them with essential tools such as a diploma and self-confidence, they will be empowered to unlock the doors that lead to autonomy and self-actualization.

OUR MISSION

Contribute to academic resilience and the realization of the full potential of youth residing in low-income housing (HLM) in Montreal.

OUR VISION

We envision a future in which nearly 10,000 young Montrealers residing in low-income housing and confronting socio-economic challenges have equitable opportunities and discover their place within the community.

OUR PRINCIPLES

SOCIAL JUSTICE

Dedication to advancing diversity, inclusion, and equal opportunities.

INTEGRITY

Dedication to effective management and governance.

COLLABORATION

The dedication to fostering mutual assistance, complementarity, and coherence of actions within the community through strategic partnerships.

TO ASSIST YOUNG INDIVIDUALS IN NAVIGATING THE FUTURE, LET US EXTEND OUR SUPPORT!

The Fondation La Clé recognizes that its scholarships for academic perseverance and financial assistance can significantly influence young individuals' opportunities for success.

This is why it has dedicated itself to providing two categories of scholarships to young individuals from social housing who are enrolled in secondary education:

Persévéra scholarships in collaboration with Éducaide

Financial aid scholarships in partnership with the Fondation du Collège de Montréal

PERSEVERANCE SCHOLARSHIPS

In the 2023-2024 academic year, in collaboration with the Éducaide organization and the school teams from 22 secondary schools, 113 Persévéra scholarships, each valued at \$500, were granted to youth residing in Montreal's public housing projects, amounting to a total of \$56,500.

These scholarships are granted in increments of \$500, spanning from secondary 3 to 5.

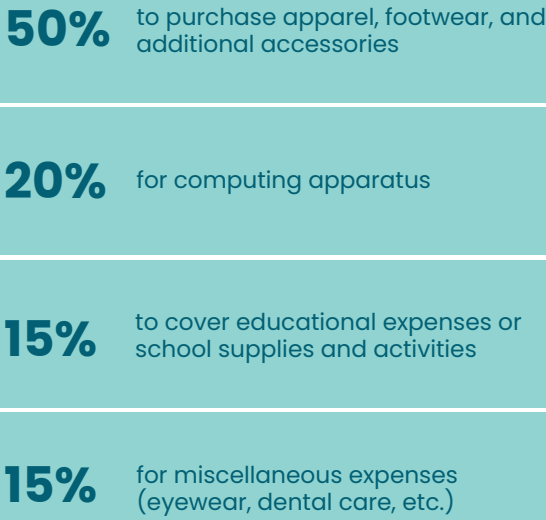
In our efforts to motivate them, the funds are accessible to young individuals a few weeks after the commencement of each year.

To qualify for a scholarship, individuals must fulfill three criteria:

- Residing in social housing.
- Be a Year 10 student.
- Exhibit a robust commitment to perseverance and be ready to exert the requisite effort, whether to enhance behavior, attitude, or academic performance.



Utilization of the scholarship



We extend our heartfelt gratitude to the Éducaide team for their invaluable support, which has been instrumental to the success of this program. We are thrilled to collaborate with Mélanie Kéroack and Marie-Pier Grenier.

We would like to emphasize the significant contributions of each school team that supports our youth on a daily basis. They are responsible for supervising, encouraging, intervening, and managing the program alongside the young individuals and their families. They merit our utmost admiration and recognition.



“It was the first occasion in my life that I received such a substantial sum of money. Consequently, it was undoubtedly a shock.”
(young man, 16 years old)

Here is the list of schools attended by nearly all (90%) of our scholarship recipients.

Chomedey-de-Maisonneuve / Mercier School – Hochelaga-Maisonneuve
Edouard-Montpetit / Mercier School – Hochelaga-Maisonneuve
Georges-Vanier School / Villeray-Saint-Michel-Parc-Extension
Pierre-Dupuy / Ville-Marie Academy
Louis-Joseph-Papineau School / Villeray-Saint-Michel-Parc-Extension
Calixa-Lavallée Secondary School / Montreal-North
Saint-Henri School / Southwest
Henri-Bourassa High School / Montreal North
Dalbé-Viau / LaSalle Secondary School

According to the Ministry of Education, all of these schools possess a deprivation index of 9 or 10. Schools are evaluated on a scale from 1 to 10, with 10 representing the highest index.



“

Some students begin the program in secondary 3, followed by continued support in secondary 4 and 5. [...] I believe this is a significant advantage, as it enables us to sustain a connection with students who may be more vulnerable and come from disadvantaged backgrounds.
(Scholastic team)



EVALUATION AND OUTCOMES OF THE FOUNDATION'S SCHOLARSHIP PROGRAM

This year, the Fondation La Clé benefited from the expertise of the Research Chair on Reducing Social Inequalities in Health at the Faculty of Human Sciences at the Université du Québec à Montréal (UQAM). This initiative was a key focus of the 2024-2026 strategic planning. We would like to take this opportunity to express our sincere gratitude to the Chair and the team (Soumeya and Charlotte) led by Janie Houle, Ph.D., from the Department of Psychology.

Their generous contribution enabled the execution of an evaluation that concentrated on two specific objectives:

- Elucidate the impacts of receiving a scholarship from the Fondation La Clé, considering the perspectives of youth, their parents, and educational teams.
- Identify enhancements to the scholarship program to more effectively address the needs of youth and fulfill the objectives set forth by the Foundation.

Following interviews with our three target groups—young individuals, parents, and school teams—the researchers observed that, due to the scholarships, young people experienced a notable sense of:

- Enhanced academic motivation
- Acknowledgment of their contributions
- Economic independence
- An opportunity to financially support their family



It significantly impacted me. It motivated me to push my limits and conquer the most challenging aspects, instilling confidence that I can maintain this progress in the coming year.
(Young 15 years of age)



Their parents reported that the scholarship had instilled a sense of pride and peace of mind. Many felt reassured that their child was on a trajectory toward success.



“Even discussing it with you now fills me with pride! It demonstrates that my son [...], if he maintains this trajectory, may not only receive a scholarship but also secure his future.” (Parent)

Regarding the school teams, they primarily emphasized that the scholarship facilitated the establishment of a robust and enduring connection with the youth.

The outcomes of this evaluation pleased the administrators and our partners, who resolved to utilize the report to pinpoint strategies for enhancing the impact and relevance of the scholarship program.

We will provide further information next year!

Participating in this impact assessment was a significant experience. The research team's collaboration with families, school teams, and the Foundation facilitated a comprehensive and nuanced examination of the program and potential pathways for its advancement. As a result of this effort, we now possess a deeper understanding of the needs of young individuals in social housing regarding academic perseverance and how to enhance our support for them in their journey.

Soumeya, an undergraduate student in psychology at UQAM and a research assistant on the Charlotte project, is also a doctoral candidate in community psychology at UQAM and serves as a research assistant on the Charlotte project.

MONTREAL COLLEGE SCHOLARSHIPS

The partnership between the Collège de Montréal and the Fondation La Clé is now in its fourth year. **To date, 22 sixth-grade students have had the opportunity to pursue their secondary education at Collège de Montréal, made possible by the generous support of the Fondation du Collège de Montréal. To ease the financial burden on parents, the Fondation La Clé also provides each of these students with a financial aid scholarship of up to \$500 annually for five years.**

In contrast to the Persévéra scholarship, the criteria for granting this scholarship are more stringent: students must maintain an exemplary academic record, both in terms of academics and conduct.

For the academic year 2023-2024, seven young individuals from social housing commenced secondary 1 at the Collège de Montréal.

We wish to convey our profound appreciation to the Collège de Montréal and its foundation for their generosity and willingness to support. As a result of their contributions, several of our youth have the opportunity to enroll in an educational institution renowned for its pedagogical innovations, diverse educational activities, and tailored support.



“ Since its establishment in 1964, the Fondation du College de Montreal has granted over \$6,000,000 to more than 4,000 young individuals. These young individuals hail from families whose financial circumstances would not typically permit them to pursue studies in this esteemed environment. It is through the support of our esteemed partners, including the Fondation La Clé, that we can significantly influence their future. We firmly believe that education is the key through which young people can thrive and evolve into well-rounded adults. ”

Lynda Brault, Executive Director of the Fondation du College de Montreal

In the photograph: on the left, Étienne Berlinguet (Chairman of the Board of Directors of the Fondation du Collège de Montréal) and on the right, Lynda Brault.

I am pleased to provide you with an update on the progress of the 22 students supported by the Fondation Collège de Montréal and the Fondation La Clé for the recently concluded 2023-2024 academic year.

As we celebrate our fourth year of partnership, the inaugural scholarship students have just completed their fourth year of secondary school. These three students have achieved an overall average between 71% and 82%. One of these students received a French Prize at the Meritas Gala held at the end of May.

In their third year of secondary school, the five scholarship students achieved an overall average between 69% and 94%, with two students surpassing an average of 90%. Furthermore, three of them received awards at the Gala Méritas at the year's conclusion in the categories of academic excellence, French, and role model for peers.

In the second year of secondary school, seven students received financial aid scholarships. These students achieved an overall average between 73% and 86%. One scholarship recipient at this level was honored with an award for effort and perseverance at the Meritas Gala last May.

In the 1st year of secondary school, seven of our youngest students received financial aid scholarships for the 2023-2024 academic year. They achieved an overall average between 84% and 91%, representing an excellent cohort. Furthermore, one of these students was awarded a French Prize at the Méritas Gala.

Overall, we are extremely pleased and proud of the progress these young individuals have achieved with us over the past four years. I am confident that they will thrive during their time at Collège de Montréal while establishing a strong foundation for their future.

I am delighted to confirm that six new students from the Fondation La Clé will be joining us in the first year of secondary school at the beginning of the academic year. Consequently, a total of 28 students referred by your organization will be attending the College this year.

Moreover, the year 2024-2025 will be pivotal for our partnership, as the inaugural graduating class referred by your foundation will celebrate their Graduation Ceremony at the Notre-Dame Basilica on June 17, 2025. This event promises to be an emotionally charged occasion not to be missed!

In conclusion, I would like to express my gratitude to the Fondation Collège de Montréal for its unwavering support, as well as to the team at the Fondation La Clé for their collaboration in the success of this partnership.



Patricia Steben
Executive Director



TO ASSIST YOUNG INDIVIDUALS IN NAVIGATING THE FUTURE, LET US MAINTAIN THEIR CONNECTION!

CONNECTING FAMILIES TO BROADBAND INTERNET

This new initiative, targeting families with children residing in social housing, was executed over the past year.

Funded by the significant campaign that concluded in 2022, it seeks to offer complimentary high-speed Internet access to 450 families until March 2028.

During the 2023-2024 year, in collaboration with Videotron, the Fondation La Clé facilitated access to a high-performance internet network for 250 new families. This advancement allows multiple members of the same family to connect simultaneously. To date, 400 new families have reaped the benefits of this service.

Today's educational institutions necessitate continuous access to computer resources and the Internet, extending well beyond the operating hours of schools and public libraries. This is the reason the Foundation has pledged to cover the monthly expenses for families who have made such requests.

The process is ongoing, and we are confident in our ability to connect 450 families within the upcoming year.

“With four children at home, several of whom are still in school, access to the internet is essential for homework, entertainment, and communication with family and friends. We extend our gratitude to the Fondation La Clé for their support, which has alleviated this financial burden and enabled us to continue benefiting from internet access. Thank you!



TO ASSIST YOUNG INDIVIDUALS IN EMBRACING THE FUTURE,
LET US PROVIDE THEM WITH MOMENTS OF PLEASURE!

SUPPORT FOR COMMUNITY ORGANIZATIONS



The aspiration for success, the joy of learning, and self-assurance are vital competencies for academic resilience. The Fondation la Clé firmly believes that these competencies, along with many others, are not solely developed within the school environment and necessitate community involvement.

Since its inception, the Foundation has supported established community organizations to empower young individuals in low-income housing to engage consistently and diligently in their activities. It is important to note that families residing in low-income housing, often allophone and single-parent, hailing from immigrant backgrounds, face significant financial and, at times, social challenges, making them some of the most disadvantaged groups in Quebec.

Among the 55,000 individuals residing in social housing:



In 2023-2024, the Fondation La Clé allocated \$135,000 to initiatives spearheaded by community organizations renowned for their proficiency in assisting at-risk youth.

Instead of organizing these activities independently, we opt to collaborate with established resources within the community (see appendix no. 1).



The specific context of families complicates the motivation and academic achievement of young individuals. To assist them, numerous community organizations have emerged within the HLMs themselves.

Each year, numerous services, programs, and projects are established to assist young people and their families. The Fondation La Clé has opted to finance several of these initiatives.

Here is a partial list of the services provided:

- Academic assistance
- Sports, cultural, culinary, and various other activities
- Personal development seminars
 - Self-knowledge
 - Problem and conflict resolution
 - Emotional management
 - Communication
- Information Technology Education
- Workshops for the development of parenting skills aimed at parents
- Food safety



The Fondation La Clé is instrumental in fulfilling our mission. It aids us in various projects that provide tangible support to young individuals and families residing in HLM De Mentana. In 2024, we facilitated internet access for several families and referred young people for scholarship opportunities. Furthermore, the Foundation has been assisting us since 2023 in providing homework assistance for children aged 6 to 11. The Foundation fosters robust relationships with its community partners, enabling the development of programs tailored to genuine needs.

Carl Suprenant, General Director of the Centre le Beau Voyage, and Yon Garbisu, Youth Worker.

FOR YOUNG INDIVIDUALS TO EMBRACE THE FUTURE, EVERY CONTRIBUTION MATTERS!

THE EVENING OF OPPORTUNITIES



On June 13, 2024, the inaugural edition of the Soirée des Possibles took place, a benefit cocktail event that united over 200 partners, donors, and volunteers committed to supporting young individuals residing in affordable housing. During this event, a net total of \$65,000 was raised. It is noteworthy that this evening returned after a five-year hiatus.

A special acknowledgment is due to the organizing committee, whose exceptional mobilization efforts contributed significantly to the event's success.

A notable moment of the evening was the announcement of the partnership between Corneille and the Fondation La Clé. As an advocate for youth in social housing, Corneille conveyed his enthusiasm:

"When I encounter an individual from the HLM, my gaze is imbued with respect, as I believe that, inevitably, there exists a latent genius within."

The second edition is currently in preparation, with the organizing committee actively engaged in the process. The date will be confirmed shortly.



WE EXTEND OUR GRATITUDE TO OUR PARTNERS.

Alumico, Aon, Courlem Électrique Inc, Constructions Embec Inc, Cima +, Gestion d'Actifs Bastion Inc, GMP Énergie, Lavery, Norton Rose Fulbright, Plomberie Chauffage Normand Inc, Plomberie Mario Thivierge Inc, Prograz D.M.N Inc, Rachel Julien Inc, Rayside Labossière, Roland Grenier Construction, and Scelltech



THE MONTREAL MUNICIPAL HOUSING OFFICE EMPLOYMENT CAMPAIGN

The employees and executives of the Office municipal d'habitation de Montréal have been steadfast allies since the inception of the Foundation. Numerous events are organized to generate funds for the Foundation. Whether during the annual BBQ, the bread sale at the OMHM cafeteria, or other initiatives, \$6,000 was raised for the Foundation last year.

Let us recall that employees also contribute through source deductions, and last year, we received \$17,000.

Thank you all for your contributions, as each of you plays a vital role in providing support to young individuals in social housing.



THE MONTREAL 21K CHARITY EVENT

On April 20, 2024, runners from various teams, including Scelltech, Énergir, and the Office municipal d’habitation de Montréal, gathered at Parc Jean-Drapeau to compete in the 1, 5, 10, and 21 km courses in support of the Fondation La Clé. Reviewing the pre-race photos, our participants appeared motivated and energized.

Our target of \$20,000 was significantly surpassed, owing to the enthusiasm and commitment of our fundraisers. The remarkable total of \$26,700 was contributed to the Foundation.

This achievement enabled us to secure 3rd place in the category for organizations with the highest average donations collected per runner. This accolade was accompanied by a donation of \$750.

Congratulations and thank you to all our participants. We hope that to the 2025 edition, which will take place on April 26, 2025, is as intoxicating as that of 2024.

Until then, enjoy your training!



Few experiences instill as much pride and provide as much enjoyment and health benefits as running together to support a cause you are passionate about. Following this event, one can only feel a sense of well-being, both physically and emotionally. The entire OMHM team for the Fondation La Clé is delighted to have contributed to fostering the academic success of young individuals in social housing. Go, young people!
Go, Fondation La Clé!

Julien Crevier, Communications Officer at the OMHM and Team Leader for the 21K Montreal 2024 Charity Challenge.

OUR COLLABORATORS



FOR THE ALLOCATION OF SCHOLARSHIPS TO YOUTH.

- The Éducaide team
- The secondary school teams from the three (3) French-speaking school boards in Montreal that collaborate with us (refer to the list on page 7)
- The Fondation College de Montréal and College de Montreal
- The team from the Research Chair on the Reduction of Social Inequalities in Health at the Faculty of Human Sciences, University of Quebec in Montreal (UQAM), conducted an evaluation led by Charlotte Fournier and Soumeiya Hida, under the supervision of Janie Houle, Ph.D. in Psychology.

FOR THE PERSONAL AND SOCIAL ADVANCEMENT OF YOUTH

- The nine (9) community organizations within HLM (refer to appendix list no. 1)
- The community engagement team of the Montreal Municipal Housing Office (OMHM)

FOR OUR FUNDRAISING INITIATIVES

- Our participants, sponsors, and benefactors.
- OMHM volunteers and retirees
- Our relatives and acquaintances

FOR THE GOVERNANCE AND OVERSIGHT OF THE FOUNDATION

All the exceptional teams at OMHM, especially those in communications, accounting, IT, and general management.

FOR FOUNDATIONAL COMMUNICATIONS

- Patrice Bernier, our representative
- The artist Corneille, our representative
- JRoyer Marketing and Communication
- Horizon
- Christine Blanchette

FOR ALL THE AFOREMENTIONED REASONS AND ADDITIONAL CONSIDERATIONS!

The Foundation's Board of Directors

**Collaborating to empower young individuals in social housing.
We extend our gratitude to our partners!**

THE BOARD OF DIRECTORS AND THE FOUNDATION STAFF



BRIGITTE SAMSON



GUILLAUME PETITCLERC



JULIA DAVIES



HUGO SIGOUIN PLASSE



KARINE PARÉ



FABIEN COURNOYER



NATHALIE SANON



DENIS GUERTIN



NATHALIE GODBOUT



CHARLES-ANTOINE LUSSIER



FRANK-EMILE SAINT-PHARD



ISABELLE PARIZEAU



STEPHEN GAUTHIER



PATSY JONCAS, Executive Director of the foundation
JULIA FRAYSSE Foundation, Head of Philanthropic Development and Partnerships.

DONORS' HONOR ROLL

SIGNIFICANT CAMPAIGN CONTRIBUTORS

Diamond Branches (\$100,000 and above)







Platinum Tier (\$50,000 to \$99,999)



- Gold Branches (\$25,000 to \$49,999)**
- Canderel
 - CEOS Family Office
 - Cogir Foundation
 - Walter J. Somers Foundation
 - BMR
 - Group C. Laganière
 - Group Kevlar
 - Group Mach
 - Robin and Evie Foundation
 - Jacques Vincent
 - Lamour
 - Logistec Corporation
 - Reliance Construction
 - Sanimax
 - Sotramont

- Silver-tuned (\$10,000 to \$24,999)**
- CIMA +
 - Ciment Québec - Unibéton
 - Duroking Construction
 - Énergir
 - APCHQ Foundation
 - FTQ Real Estate Solidarity Fund
 - ITR Acoustique Mtl Inc.
 - Lemay
 - Excavations Payette Ltd
 - Interiors Bousada
 - MOOV AI
 - Navada Ltd
 - Progaz DMN

- Bronze Branches (\$5,000 to \$9,999)**
- Santco
 - Devimco
 - FABG Architects
 - GPL Insurance
 - AGF Group
 - SCV Group Incorporated.
 - Ivanhoé Cambridge
 - MSDL Architects, Inc.
 - Pembroke Management

Donors

Over \$5,000

Dankooz
Energy

From \$500 to \$2,000

Beautifi Solutions, Inc.
Dr. Wouter Saint-Phard, MD, Inc.
Hewlett Packard Enterprise
The Kenny and Lynn Etinson Family Foundation
Daniel Hodder
Danielle Cécile
Fabien Cournoyer
Jeff Hart
Lisette Thibodeau
Marie-Josée Alary
Robert Labelle

From \$50 to \$499

Alain Cournoyer
Aligned Interiors
Allan Gaudreault
Anne-Marie Ferland
Bernard Cyr
Bertrand Ferrus
Carl H. Exantus
Carmel Bouchard
Céline Leduc Topp
Charles Auger
Claudia Ladouceur
Danie Cournoyer
Daniel Bédard
Daniel Pagé
Debbie Di Chiaro
Denis Pineault
Denis Quirion
Diane Lajeunesse
Didier Michel
Doraine Dorval

Social Fund of the Superior Court of Montreal
Francois Frank Turgeon
Frédérique Jeanty
Geneviève Roux
Gerry Polynice
Gilles Gagnon
Gisèle Jolin
Hélène Le Bel
Hubert Dubois
Hugo Sigouin-Plasse
James McGregor
Jamie Forbes
Jannick Bouthillette
Jesus Gregorio Agudelo Galeano
Johanne Goulet
John Etienne
John Johnston
John Mackay
Judith Lemaire
Judith Michel
Julia David
Julie Dolman
Karen Forbes
Katia Stephen
Lise Noel
Lorraine Laurin
Manon Allard
Marianne Cloutier
Marie Bouchard
Marie Renaud
Marie-Andrée Thifault
Marie-José Roux Fauteux
Marie-Josée Lestage
Marie-Pier Elias
Mario De Fanti
Mario Roy
Mark G. Peacock
Martin Turgeon
Michel Girard
Mireille Bélair
Nancy Shoiry
Nathalie Sanon
Normand Stevenson
Patrick Raphaël

Pierre Benjamin
Pierre Labelle
Reginald Jeudine
Robert Juneau
Simon Jasmin
Sophie Bourque
Tamara Noël
Vincent-Charles Hodder
Violaine Paquette
Vladimir Cifinix
Yves Sauvé
Yves Volcy
Yvon Paquette.

Monthly Contributors

Benoit Dorais
Brigitte Samson
Clotilde Tarditi
Frank-Émile Saint-Phard
Raïssa Epale
Ronald Delcourt
Sandrine Debbane
Sylvain Ducas
Sylvie Crispo

Contributions of goods and services

Aldo Aligned Interiors
Alvaro Coiffure
Céline Gendron Dion
Chalet la Branche
Chopin
Christelle Molez
Clifford
Jean-Félix
Énergir
Esther Giroux
Fairmont The Queen Elizabeth
France McNeil
Groupe De Palma
Isabelle Pépin
Jean-Jacques Bohémier

The Ferme des Quatre-Temps
The Great Montreal Tasting A3
The board members of the foundation
Mont Sutton
VIC Studios
Victoria Park Medispa
Waahli

THANKS!

Click here to
download our
financial report.



APPENDIX NO. 1 – LIST OF COMMUNITY ORGANIZATIONS SUPPORTED BY THE FOUNDATION

In a context where locating competent and available personnel is challenging, the Fondation La Clé prioritizes support for established organizations that perform exceptional work in the community. Below is a list of these organizations, along with their locations and the services they offer to young people.

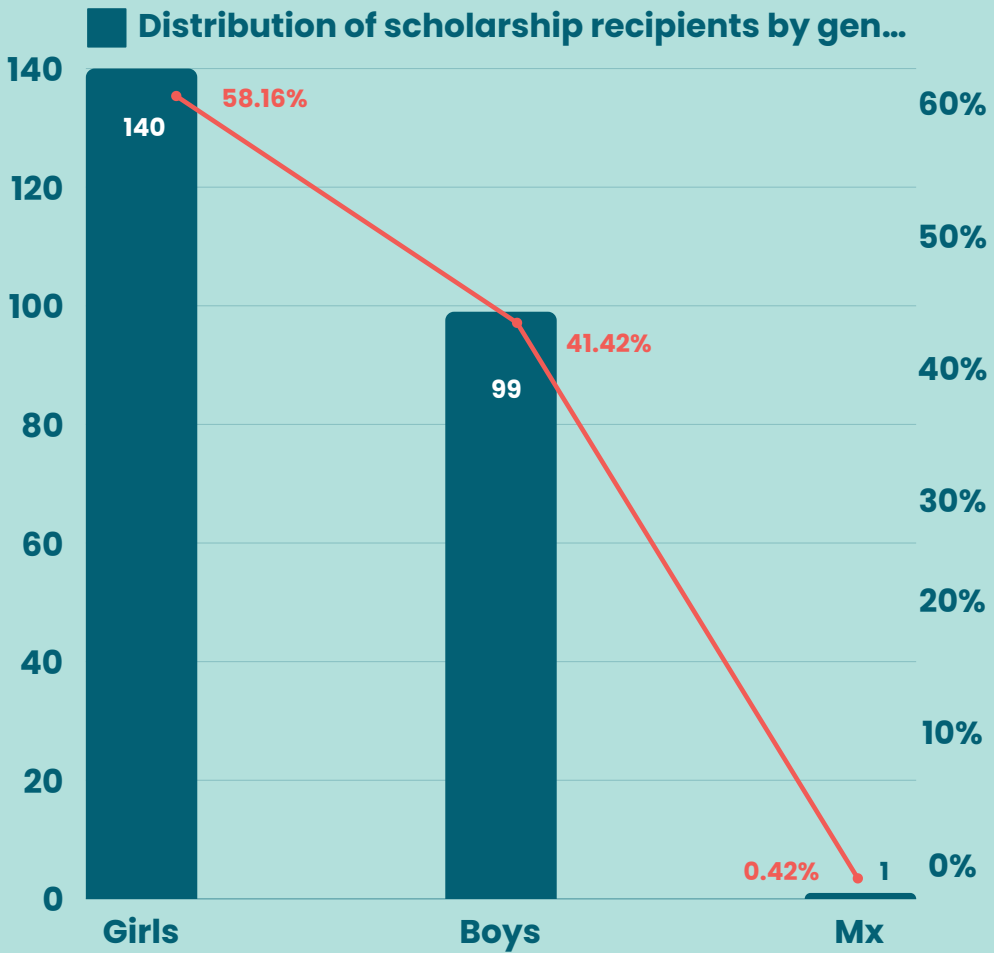
Workshop 850	Southwest	Academic assistance Sports, cultural events, etc. Food safety
Elegant Travel Hub	Plateau Mont-Royal	Academic assistance Personal growth (scholarly, physical, emotional, and social) Nutritional security
Petite-Côte Community Centre	Rosemont – Petite-Patrie	Academic assistance Weekly sessions integrating reading and athletics Diverse activities
Center for Success and Development Assistance	Southwest	Academic assistance Oversight with parents and educators Initiatives fostering civic involvement
Duff-Court Neighborhood Life Committee	LaSalle	Academic assistance Personal growth (social and emotional) Cultural and gastronomic activities Communication with educators and parents
Boyce-Viau Youth Centre	Hochelaga-Maisonneuve	Academic assistance Information technology education Parental support
Youth Education Corporation	Villeray – St-Michel – Parc-Extension	Academic support in collaboration with mentors, secondary school students' preparation for the transition to secondary education, and monitoring and assistance for parents.
Youth enhancement	Montreal-Nord	Academic assistance Personal growth Oversight and support for parents
Between-House	Ahuntsic-Cartierville	Academic assistance Personal growth

APPENDIX NO. 2 – STATISTICAL DATA ON PERSÉVÉRA SCHOLARSHIPS FROM 2014 TO 2024

Although the Fondation La Clé was established in 2009, its initial activities commenced in 2011, and it was during the 2014-2015 academic year that the first scholarships were awarded to youth.

This is a portrait of the Foundation's 239 Persévéra scholarship recipients. This portrait, presented through graphs, encompasses scholarship recipients from the 2014-2015 to the 2023-2024 academic years. Consequently, it reflects the status of young individuals who completed their studies in June 2024.

The first graph below illustrates the distribution of our scholarship recipients by gender, revealing that the number of female recipients exceeds that of their male counterparts.



In 2023, Statistics Canada released a report detailing the enrollment of students in regular youth programs within public elementary and secondary schools, categorized by grade and gender. The report reveals that during the 2021-2022 academic year, the final year of the study, Quebec had 477,342 female students and 505,389 male students (see note [1]). It is important to note that the number of individuals who did not disclose their gender is minimal.

Additionally, the statistical data from the Montreal Municipal Housing Office for 2022, concerning the age and sex of girls and boys, indicates that there were 2,784 girls aged between 6 and 18 and 2,971 boys within the same age range.

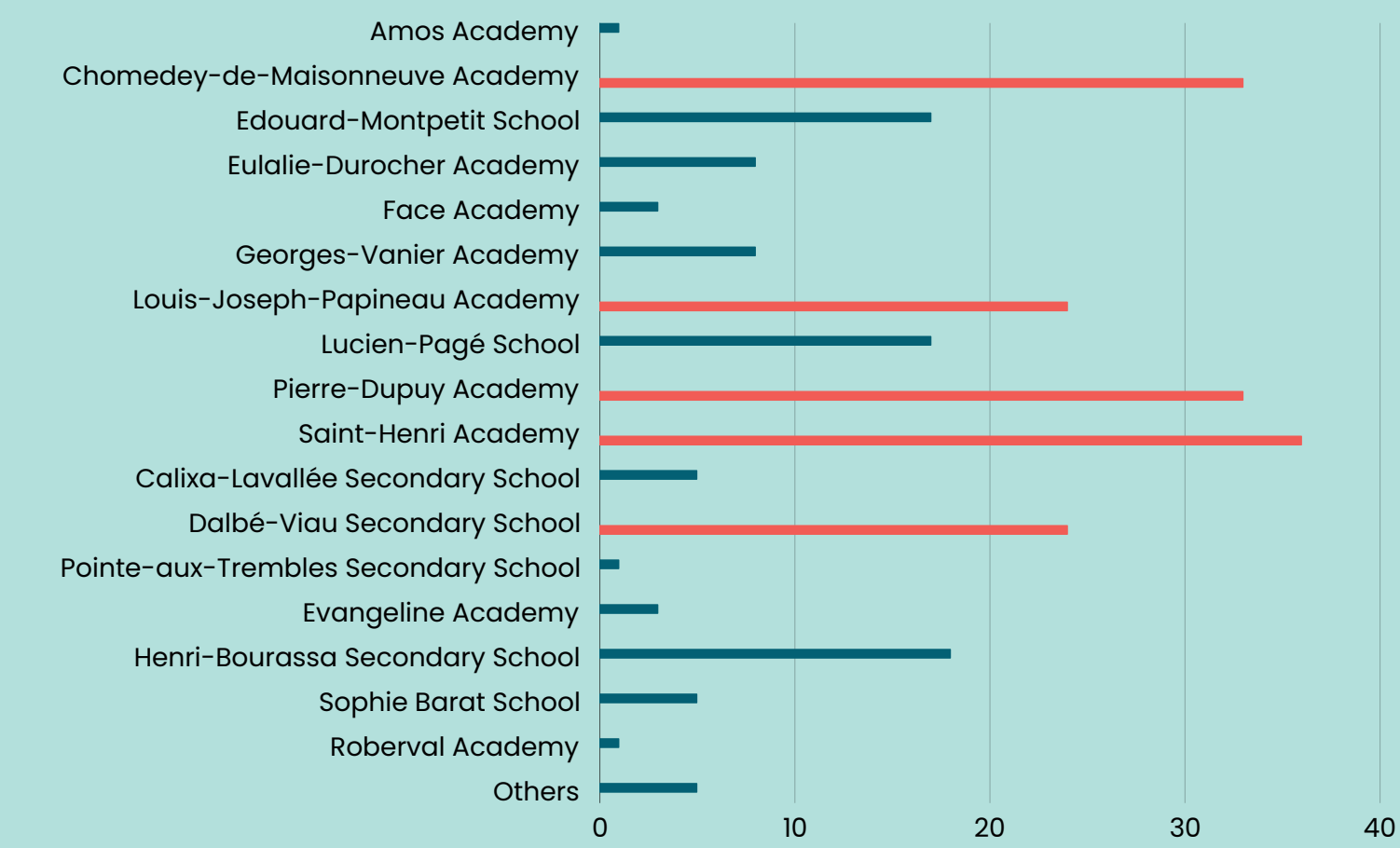
Statistics Canada, Number of students enrolled in standard youth programs within public elementary and secondary schools, categorized by grade and gender; table 36-10-0007-01; October 12, 2023

We understand that in recent years, there has been a marginally higher number of boys than girls in both social housing and public schools in Quebec.

Following analysis, the sole plausible explanation pertains to the school teams, as they are tasked with selecting scholarship recipients and tend to favor girls over boys. This issue will be closely monitored over the next year in an effort to attain parity among our scholarship recipients.

The graph below depicts the distribution of schools attended by our youth. It is important to note that these schools are ranked 9 and 10 on the deprivation scale, with 10 representing the highest level. The schools highlighted in red indicate those where we have allocated the most scholarships. These institutions are situated in the boroughs of Sud-Ouest, LaSalle, Ville-Marie, Villeray – St-Michel – Parc-Extension, and Mercier – Hochelaga-Maisonneuve.

For informational purposes, of the 20,810 HLM housing units managed by the Office municipal d'habitation de Montréal, 3,569 units are situated in the South-West; 373 in LaSalle; 2,339 in Ville-Marie (which encompasses Centre-Sud); 1,966 in Villeray – St-Michel – Parc-Extension; and 2,491 in Mercier – Hochelaga-Maisonneuve. This amounts to a total of 10,738 units, representing 51.6% of all HLM housing units in Montreal. Consequently, it is evident that slightly more than half of the HLMs are concentrated in five (5) boroughs out of the 18 that comprise Montreal.



The graph below presents an overview of the circumstances surrounding all young individuals who have been awarded a Persévéra scholarship over the past decade. It encompasses data on the cohorts from 2014–2015 to 2023–2024, representing our initial ten cohorts.

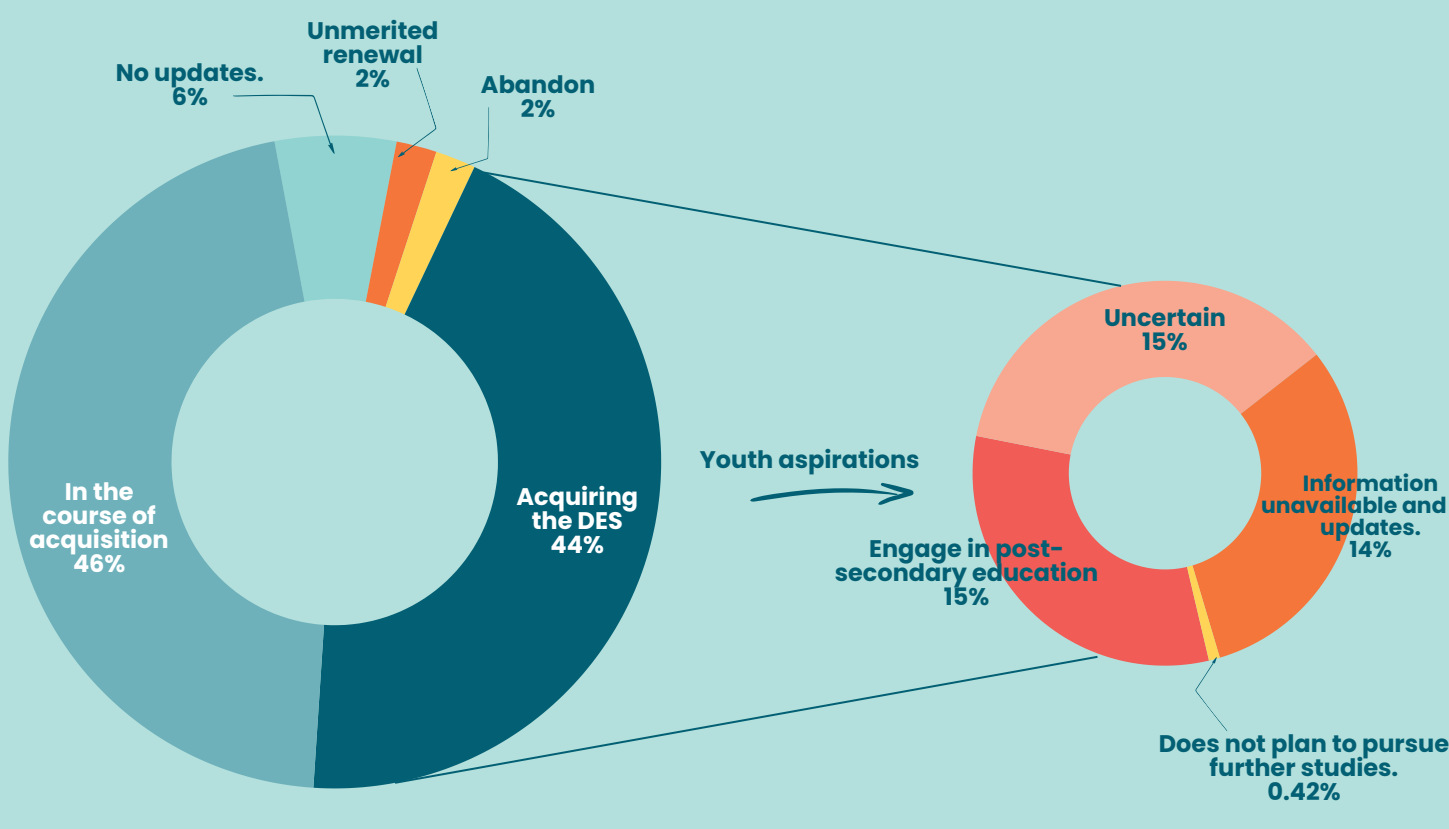
First, it is important to note that 44% of our 239 scholarship recipients earned their high school diploma (DES) after five years of study.

It is important to note that we cannot compare this data with the graduation rates reported by the three French-language school service centers in the Montreal region or by the Ministry of Education, as they calculate their graduation rates over a period of seven years, in contrast to our five-year calculation.

In Quebec, the graduation rate is calculated by considering the student's status seven years after the commencement of secondary 1. Consequently, we account for the graduation of individuals who may have not completed secondary 5 but subsequently obtained their DES in an adult education setting within the following two years.

Among the 44% who obtained their DES, 15% chose to pursue post-secondary studies, while 29% had yet to decide on continuing their education at CEGEP or in vocational training, or had not communicated their intentions. Ultimately, only one individual explicitly stated their decision to discontinue their studies.

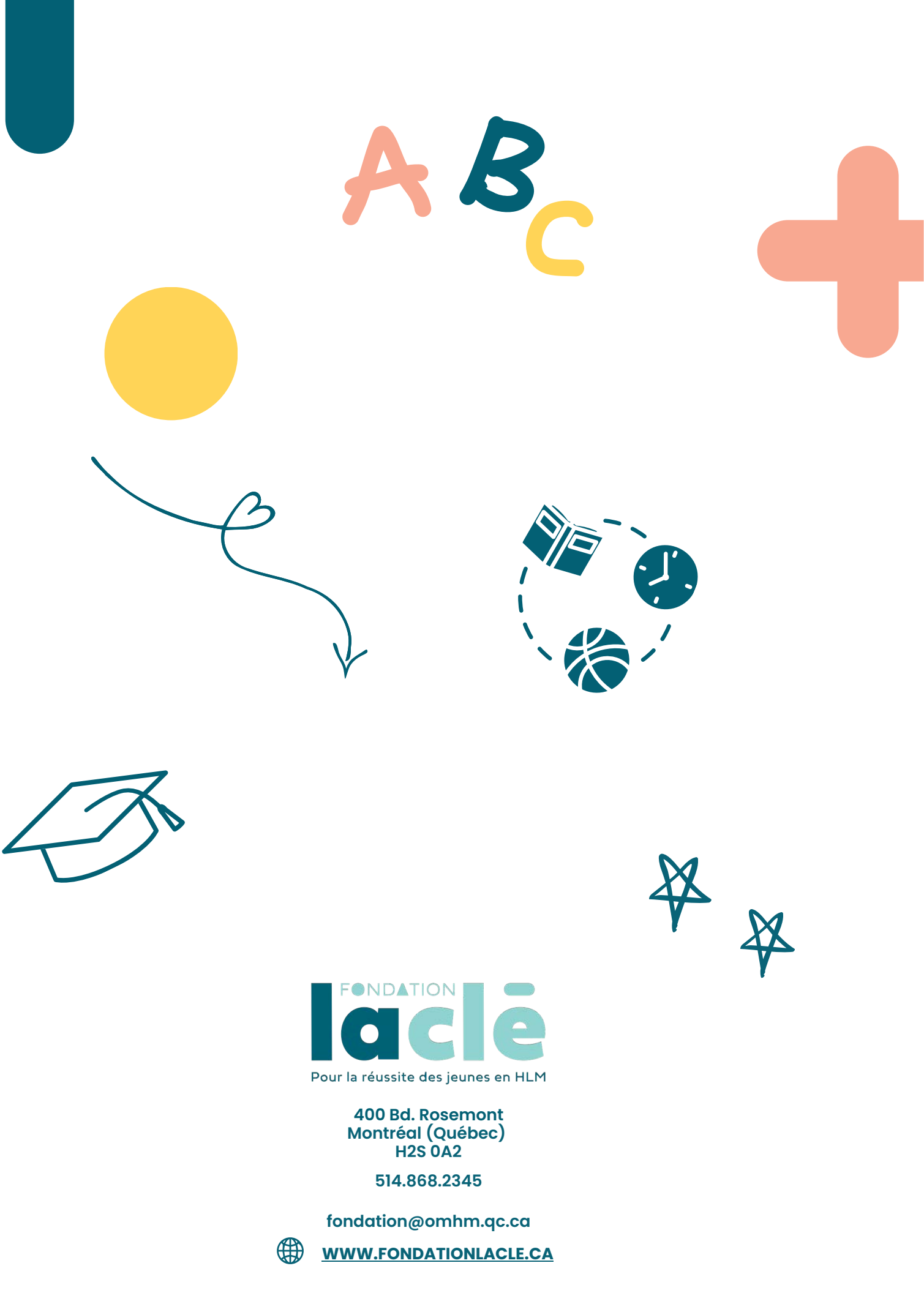
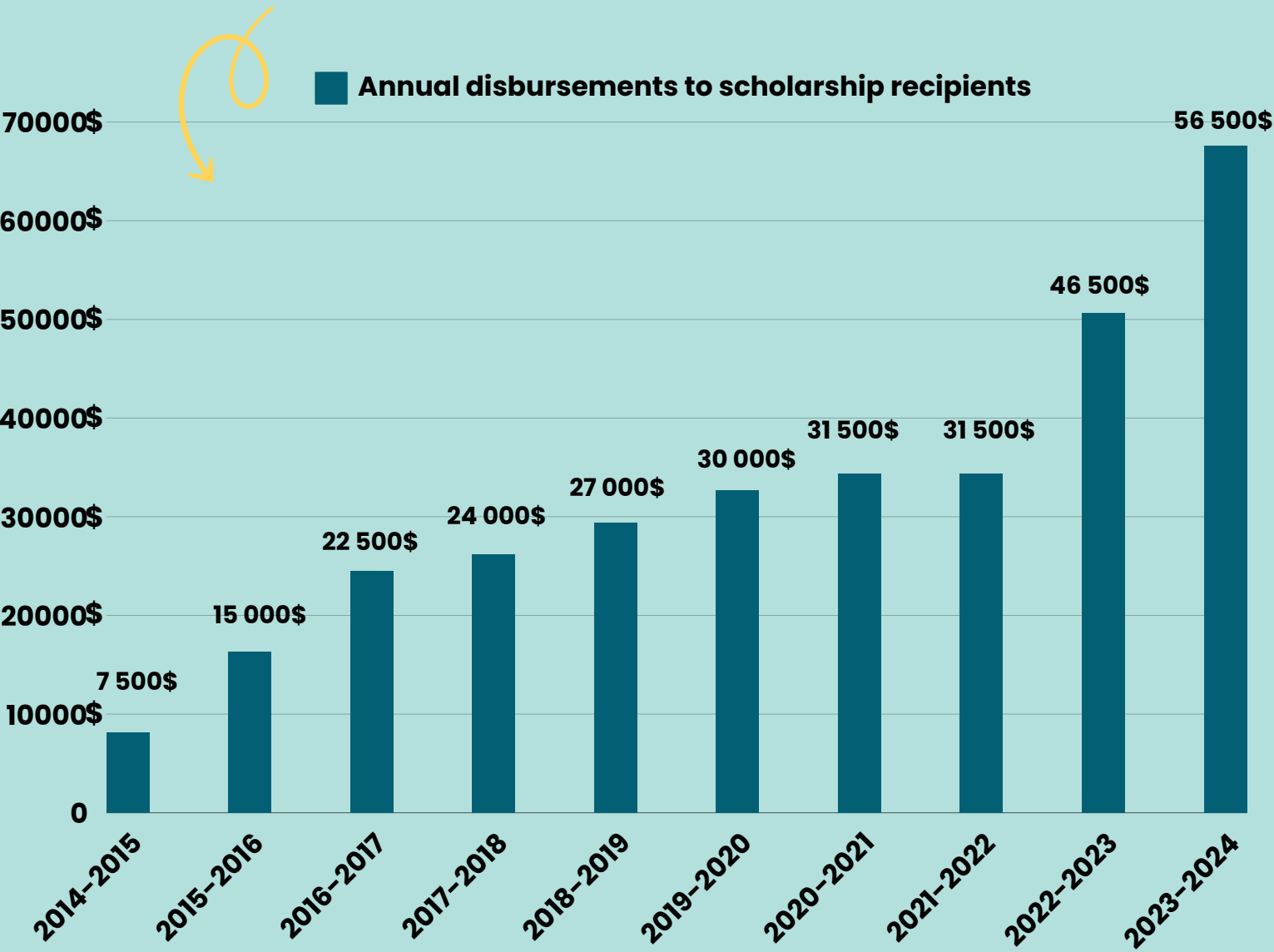
Furthermore, among those who had not completed their secondary education, 46% were still in the process of obtaining their DES, having recently finished their exams and awaiting the results. Finally, 10% of our youth had either dropped out, had their files closed, or we had no updates regarding their status.



Finally, the graph below illustrates the progression of annual payments made to scholarship recipients. The scholarship amount awarded to each young individual remained constant at \$500 per year for three years, culminating in a total of \$1,500 per recipient. However, the number of scholarship recipients has increased.

The graph illustrates a steady progression, with a notable increase of 21.5% between 2021-2022 and 2022-2023. This surge can be attributed to the outcomes of a significant fundraising campaign that concluded in 2022, which garnered donations amounting to \$2.1 million. Numerous donors opted to earmark their contributions specifically for scholarships, accounting for the substantial rise observed in 2022-2023.

Amounts approximating \$60,000 annually are anticipated until 2026-2027, marking the conclusion of donor commitments for the principal campaign.



FONDATION
lacle
Pour la réussite des jeunes en HLM

400 Bd. Rosemont
Montréal (Québec)
H2S 0A2

514.868.2345

fondation@omhm.qc.ca



WWW.FONDATIONLACLE.CA